

Welcome to the Basildon Lower Academy



R. Rees - Headteacher

V. Oddy - Director of Inclusion

E. Cahill – Deputy Headteacher

E. Huet – Deputy Headteacher

S. Peake – Designated Safeguarding Lead

C. O'Keefe – Assistant Headteacher/SENCO

T. Smith – Assistant Headteacher

L. Gray – Assistant Headteacher

N. Hullyer – SLT Enhanced Provision

B. Head – Year Leader 7 (2026-7)



Welcome to the Basildon Lower Academy



Hayden.A

George.C

Isabelle.P

Rebecca.B

Jorden.J

Iris.I

Nayme.I

Emily.C

Euan.S

Leonard.B

Sapphire.B

Sasha.S



Two sites one school KS2-5.



School Values



**CLIMATE CHANGE
IS REAL**
**BLACK LIVES
MATTER**
**NO HUMAN
IS ILLEGAL**
**LOVE IS
LOVE**

**WOMEN'S
RIGHTS
ARE HUMAN
RIGHTS**
**KINDNESS IS
EVERYTHING**



Pupil/Student Voice

“I feel supported and understood at the Lower Academy. I know I can go to staff with anything that’s on my mind.”

— *Nate, Year 8*

“The Basildon Lower Academy has supported me academically, mentally, and physically. They’ve given me the education to help build a pathway for my future and encouraged me to keep going.”

— *Harsimran, Year 9*

“The extra-curricular activities before and after school are brilliant — and so are the staff.”

— *Stevie, Year 9*

“I like this school because of how supportive it is. It gives us the chance to be independent, learn teamwork, and really understand what we’re learning. The environment motivates me to keep going, with support, respect, and discipline throughout the school.” — *Rafiat, Year 8*

“What I like about this school is the wide range of extra-curricular activities available to us.” — *Arianna, Year 7*



How amazing are our students?



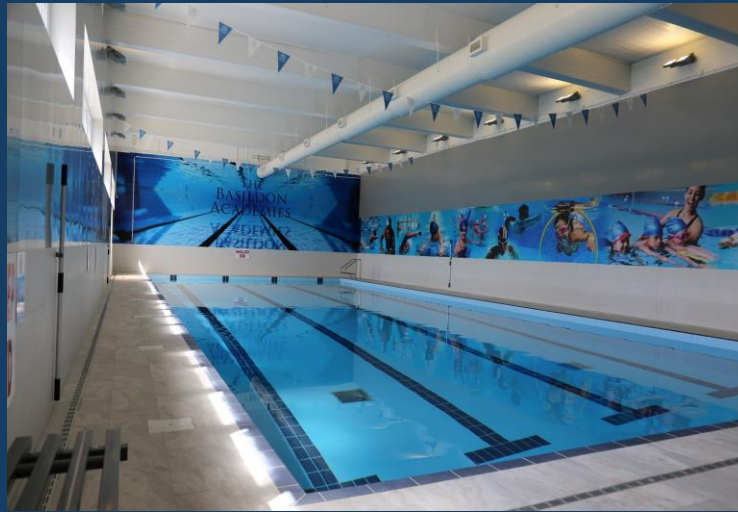
How amazing are our students?



How amazing are our facilities ?



How amazing are our facilities ?





How amazing is our pastoral care ?

At The Basildon Academies, **pastoral support is at the heart of everything we do.** We understand how important this stage of a young person's life is, and our experienced pastoral team is here every step of the way.

Whether it's help with missing uniform or equipment, tackling any issues, or simply someone to talk to — we're here to listen, guide, and support. No problem is too big or too small.

Our pastoral team celebrates the small wins and recognises positive behaviour, making sure every achievement is valued and rewarded.

Our dedicated team works hard to ensure every student feels safe, supported, and ready to thrive.

Events

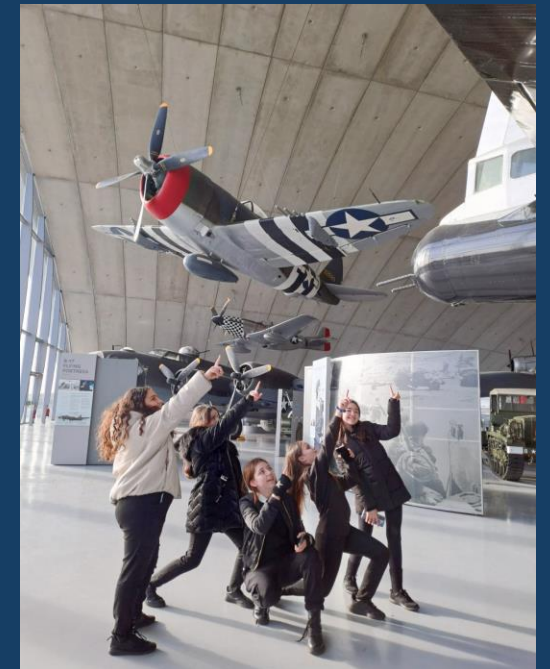


How amazing is our pastoral care ?

Each student is allocated a form tutor to greet them every morning, to check they are ready to start their day. They also have a dedicated Year Leader.

The Academies offers an exciting rewards system and reintegration hubs to support students in making positive choices. The rewards will celebrate good behaviour, effort, and progress, while the reintegration hubs will provide targeted support for students needing help to get back on track.

These initiatives are part of our ongoing commitment to creating a safe, respectful, and supportive learning environment for all.



How amazing is our student leadership and rewards system?

In Year 7, the first leadership opportunity is that of the duty student. This is a role where students take their place at their own front desk and carry out various duties to practice a range of key skills as they would in a work experience placement. They receive a badge to recognise their dedication to this task.

“I really enjoy the responsibility of helping students and staff throughout the school in my role as Duty Student, ensuring a smooth day at the Basildon Lower Academy.”

Saffa.B - Year 8



How amazing is our student leadership and rewards system?

This academic year we are developing further roles across many areas and now have a Student Leadership meeting room which is a dedicated space for student leaders' team to meet regularly and express the student viewpoint

In addition at the Lower Academy, our rewards system recognises more than just academic success — it celebrates the development of key employability skills, too.

We focus on eight essential and highly transferable attributes:

Listening, Speaking, Problem solving, Creativity, Staying positive, Aiming high, Leadership, and Teamwork.

By recognising and rewarding these skills, we support students in becoming confident, capable individuals, ready to thrive in further education, the workplace, and beyond.

This is a ½ termly reward where a certificate is presented alongside a badge to wear at school with pride!

“I’m proud to have received my certificate for Listening skills. Taking part in this has shown me life skills that I’ll use every day.” Ariana.A



How amazing are our presentation evenings?



How amazing is our attainment/progress ?

- Assessments – We have 2 Assessment Points for written exams. Class based as necessary for practical subjects.
- CATS4 -These inform teachers of granular details of our learners
- MCAS – app to find out progress data.
- Parent evenings - online and other events in person.



MCAS App for Attainment

The screenshot displays the MCAS app interface for Basildon Lower Academy. The user is logged in as Mr D Doe. The dashboard is titled "Dashboard" and includes a navigation menu on the left with options like "Data Collection Form", "Announcements", "Attendance", "Behaviour", "On Report", "Reports", "Timetable", "Academic Calendar", and "Curriculum Assessment". The main content area shows several key metrics for Jane DOE-TEST:

- Attendance:** "Is Jane at school?" - No Attendance data found.
- Announcements:** "There are announcements for Jane" - No Announcements data found.
- On Report:** "Jane does not have any 'On Report' arrangements."
- Classes:** "Jane's Classes" table showing one class: 9E-TEST, Tutor Group, with 0% attendance.
- Behaviour:** "Jane's recent behaviour" - No Behaviour data found.
- Timetable:** "What is Jane up to?" - Shows AM Tutor Group, 9E-TEST, at 08:25.
- Reports:** "How is Jane performing?" - No Reports data found.

Within the MCAS app, there are many options to navigate a student's learning journey. The assessment point results for students will be uploaded to the reports section as seen below



How successful are our students?

“I’m very happy because I didn’t think I was capable of achieving the grades I got. I’m so grateful for all the support from the school.” Pamela. T



“I’m really impressed with my results. My mock exams were a good reflection of my final grades, and everyone has been so supportive.” Ciprian.C

"Joining Basildon Academies Sixth Form was a fresh start for me. As a special educational needs (SEN) student, my past experiences in education hadn't always been positive, so stepping into a mainstream environment for the first time since primary school was daunting. But from day one, the staff made me feel welcome, and I quickly formed friendships that have made my sixth form experience truly enjoyable.

I've always been supported—whether it's academic help or personal guidance—and I've never felt held back because of my background." **Georgia**



"I chose to study Graphic Communication, 3D Design, and Engineering because I've always been passionate about designing and building things—and these subjects gave me the creative freedom and practical skills to follow that path. I especially enjoyed 3D Design; working on hands-on projects like the sharpener design pushed me to think creatively and problem-solve, and the result was something I was really proud of.

The support from my teachers made a huge difference too—they gave me honest, constructive feedback and encouraged me to aim high. That belief in me helped build my confidence." **Wanwai**

"Since joining Basildon Academies Sixth Form, I've had amazing support to help prepare me for my future. The staff have always been there to guide me, especially with the application process for the Army. They've encouraged me every step of the way and helped build my confidence. Without their support, I don't think I'd be where I am today."

What really stood out was how personal the support felt. I've been pushed to achieve my potential while still being treated with respect and understanding." **Joseph**



Key Dates: 2025-6 Year 7.

Date & Time:	Event:
Monday 29th September 2025 – 3:30-4:30	Year 7 Settling Event
Monday 12th January 2026	Year 7 AP1s Begin
Monday 9th February 2026	Year 7 AP1s Data Entry
Friday 13th February 2026	Year 7 AP1s Reports home
Thursday 5th March 2026 – 3:30 - 6:30	Year 7/8 Parents Evening
Monday 22nd June 2026	Year 7 AP2s begin
Friday 10th July 2026	Year 7 AP2s Data Entry

AP: Assessment Point



How do I support at home ?

We have a commitment to improve and maintain reading skills. We encourage as much out of school reading practice which does not need to be limited to novels. Recipe books, hobby magazines or online articles when read aloud to an adult can support progress.

Online platforms that support progress in a variety of subject progress through independent study include SENECA and MathsWatch.



How do I support at home ?

Parents and carers can play an important role in supporting literacy at home. A few simple ideas include:

- Encouraging your child to talk about what they have read or learned in lessons.
- Reading together - even if just sharing a news article, recipe, or online blog.
- Asking questions that get them to explain or summarise in their own words.
- Making space and time for reading each day.

By working together as a school and home community, we can ensure our young people develop the literacy skills that will support them not only in exams, but in life beyond the classroom.

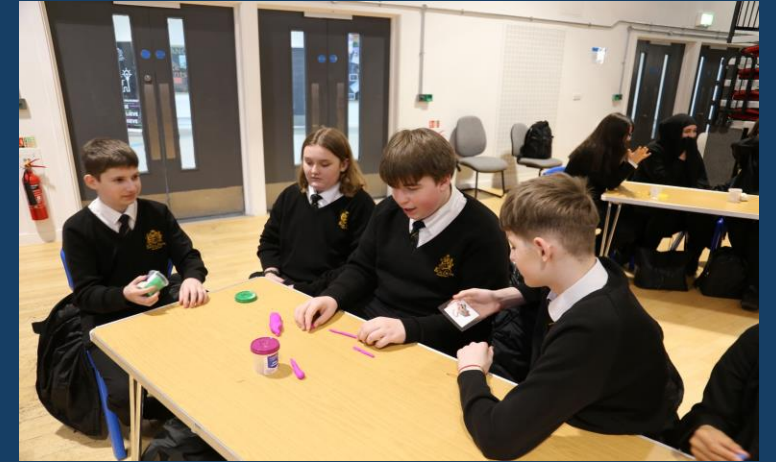


How amazing are our extra curricula activities ?

Tuesday to Thursday 3-3.30pm.



How amazing are our extra curricula activities ?



How amazing is our SEND Offer?

We are proud to recognise the incredible work of our Special Educational Needs (SEN) department, dedicated to ensuring every student receives the support they need to succeed.



Our experienced team provides tailored learning support across the school. We offer a supportive base for students before school at Breakfast Club, as well as during break and lunch times.



We run a variety of academic and social skills interventions to further support student development.

We are proud of our inclusive approach and the vital role our SEN team plays in creating a nurturing, supportive school community.



How amazing is our Wellbeing Offer?

The Wellbeing Room is available throughout the day to support students with their mental health, helping them reintegrate when needed.



How amazing will it be for your child?



“The transition from the Lower Academy to the Upper Academy was very smooth and made me feel comfortable with the changes between schools.” **Morgan – Year 11**

“The transition from Lower to Upper was very straightforward. All the teachers and staff were very welcoming and helped a lot when it came to navigating the new school.” **Lee.M – Year 11**

“At first I struggled with the idea of moving to the Upper Academy, but the transition period was very smooth and overall it was really easy to adapt.” **George – Year 11**



Attendance Message

We have a 100% attendance ethos at our school. We recognise all students for their commitment to attending school on time ready to learn. This is your school, and we want to ensure you have the best attendance to maximize all your opportunities.

If you have any concerns regarding attendance, please let any member of staff know, we are here to help. You can also visit the attendance window with any queries you may have.

ARRIVE BE HERE ATTEND
 IN TIME TO TO TO
 ASPIRE BELIEVE ACHIEVE

Attendance During 1 School Year	Equals Days Absent	Which is Approximately Weeks Absent	Which Means This Number of Lessons Missed	Absence Over 5 Years
95%	9 Days	2 Weeks	50 Lessons	¼ Year
90%	19 Days	4 Weeks	100 Lessons	½ Year
80%	38 Days	8 Weeks	200 Lessons	1 Year
70%	59 Days	12 Weeks	300 Lessons	1 ½ Years
60%	80 Days	16 Weeks	400 Lessons	2 Years
50%	100 Days	20 Weeks	500 Lessons	2 ½ Years

REWARDING GOOD ATTENDANCE

Attendance is one of the attributes that is considered when there are rewards events and trips.

Daily Rewards: Daily text messages for 100% attendance are sent via text message or through the MCAS app.

Weekly Rewards: Weekly student briefings, held on Mondays, highlight the students who have achieved 100% attendance and have no late marks. These students receive a token, which they can use for either a queue jump for the dinner queue or a hot chocolate at break time throughout the week.

Half-Termly Rewards: Each half-term, 100% attendance postcards are given to students based on their attendance for that period.

Termly Rewards: Students receive a badge and certificate during a celebration event in recognition of their termly attendance. The badge can be pinned to their tie.





George. C

Year 11's Story



THE
BASILDON
ACADEMIES



Isabelle. P



Hayden. A

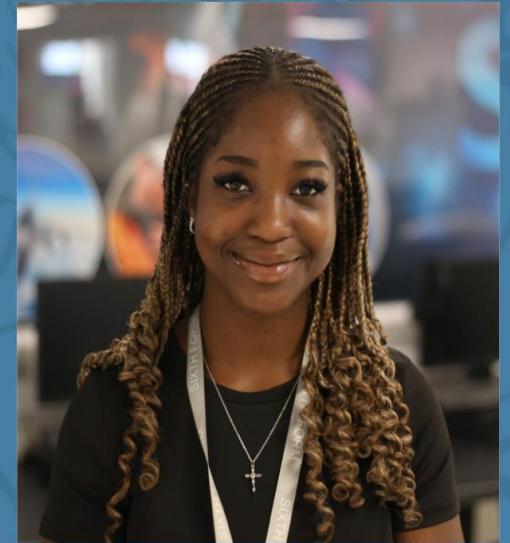


Rebecca. B

Start as you mean to go on Year 7 to Year 13

Aspire.
Believe.
Achieve.

"During my time at Basildon Upper Academy, I've grown and developed so much. From lower school through to sixth form, the support I've received has been incredible. My teachers always made sure I was learning at the right level, and I truly believe I wouldn't be where I am today without them. I'm currently studying Biology, Psychology, and Criminology, and I hope to go on to study Midwifery at the University of Manchester.



Starting sixth form can feel daunting, but Basildon Upper Academy gave me a support system that made anything feel possible, and that made all the difference. I'll always remember it as a school that genuinely cares for its students." **Kayla**

Celebrating Academic Success

We are very proud to say that our GCSE results show good improvements in every subject and across all key performance measures this year. Tailored and targeted support packages were put in place to ensure students received the personalised guidance they needed.

Similarly, there was also an improvement with our sixth form results for both A Level and BTEC pathways again with targeted support throughout the year to support students' revision and to address any learning gaps, ensuring they had every opportunity to succeed.

This year's outcomes are a testament to the dedication and commitment of our entire school community.

We congratulate all our students and look forward to following their next steps in education, training, or employment with pride.



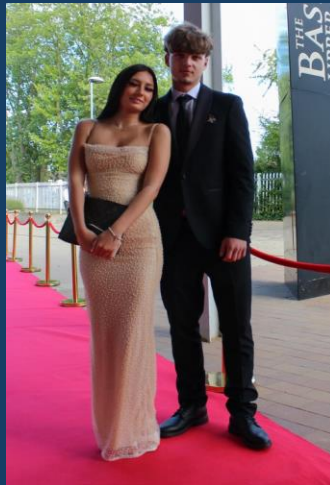
A word from Year 11



After all the GCSE exams are over, the year 11's get to experience a leavers assembly, where we revisit your time at The Basildon Academies, nominate teachers for awards and sign shirts.

We then celebrate the end of an era with a prom to remember. The evening brought students and staff together for a night of music, food and fun.

There was a great atmosphere throughout, with plenty of dancing and a live DJ providing the soundtrack for the night. The photobooth – complete with props – was a big hit, giving students a chance to snap some fun group shots and keepsake moments.



6TH FORM

In sixth form, life feels more grown up because you have more responsibilities and independence, but there's also lots of support to help you with whatever you need. Teachers are always there to guide you, whether it's with classwork, homework, or thinking about the future and what careers you want to pursue, and they treat you like young adults. We also have free periods during the day. These are really useful because we can use them to catch up on work, revise, or even just take a break and relax with friends. Sixth form is a balance between working hard and enjoying the extra freedom, and it helps prepare us for life after school.



Whether it's University, apprenticeships or work experience placements. We also get the chance to go on trips, which are fun and allow us to learn in new ways. These can be local visits, subject trips and university events.



Sixth form trips

University trips

- Throughout the year you have multiple university trips, our year went to ARU twice and some students attended the Queen Mary university summer school. The trips were fun as you got to explore campus and interact with faculty and students alike. At the time we went we also managed to talk with some sponsors that were there, and we ended up getting into different cars and other fun experiences.



Educational trips

- Throughout the year (depending on your subject) you get to go on many trips, for example biology and geography went to Epping forest last year to research ecosystems on site.



Private Study

In sixth form you get an allocated room to revise and study, as well as relax between lessons or during break.

The private study room has access to computers, printers, headphones and many more resources that a student would need in their day-to-day life here.

We also have access to PowerPoint and word, as well as other programmes. This is essential for any student doing a subject which requires coursework. This can include Computer science, IT, criminology and others!



Next Steps

Apprenticeships

- There's been numeral instances where the school has provided information into apprenticeships and how they work and how you could get into them.
- We've had professionals come and explain how apprenticeships work and how they differ to university and how there's also opportunities for degree apprenticeships.

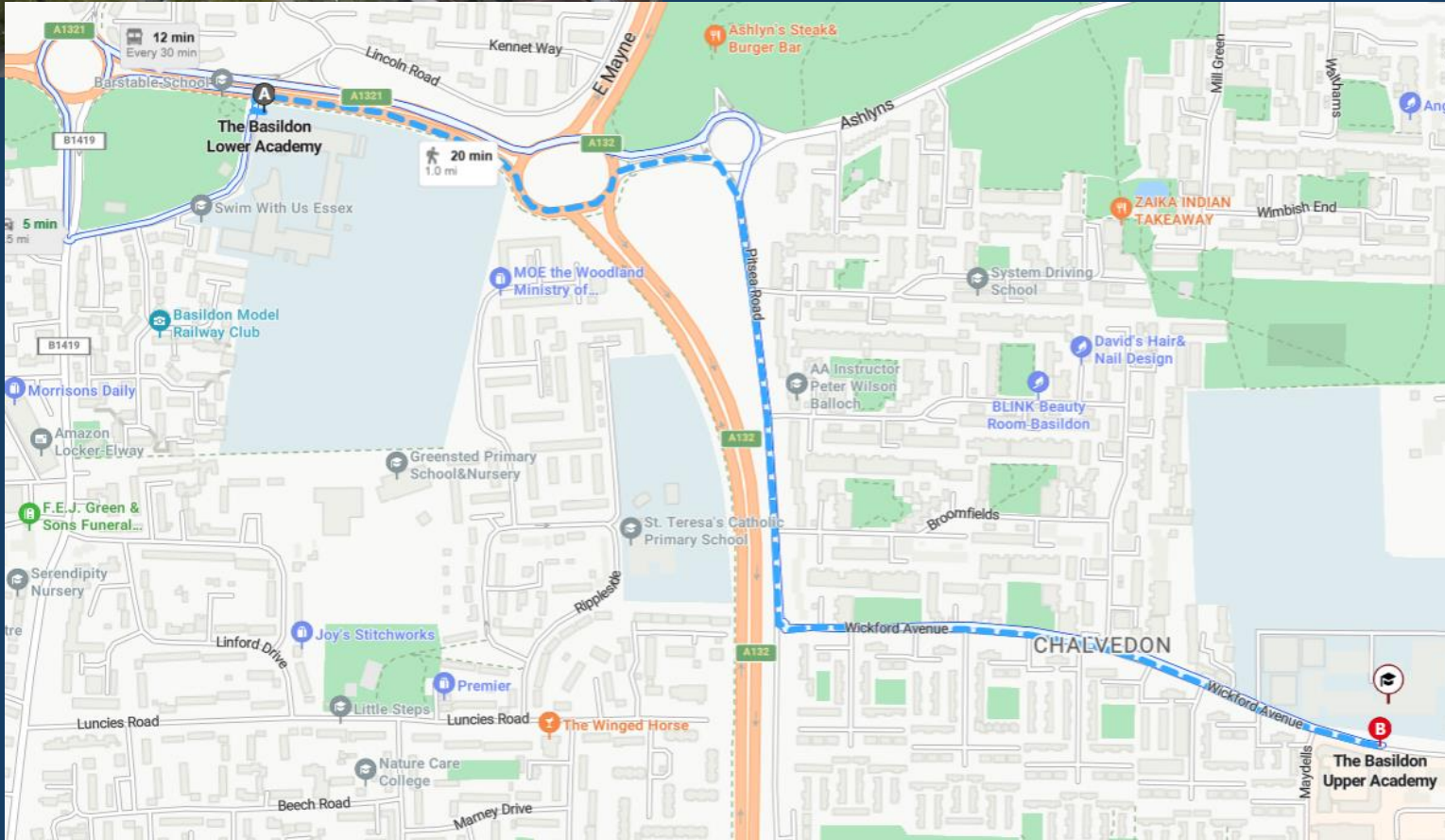
University

- The school has arranged many events for us to go to universities and network with them among other things and the best ways to get into said universities.
- The school aids incredibly in university applications in the following ways:
 - The school provides work experience options.
 - The school provides teachers to help with the UCAS applications.
 - They also help you plan your UCAT and help with revision by providing resources.



Thanking our Teachers



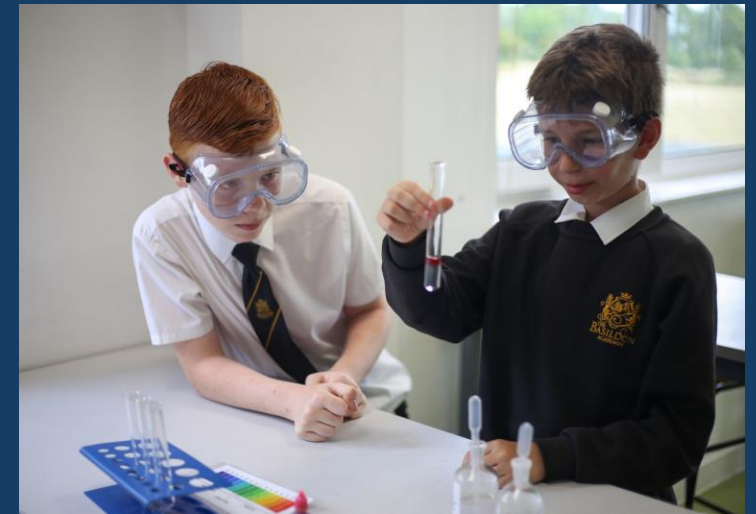
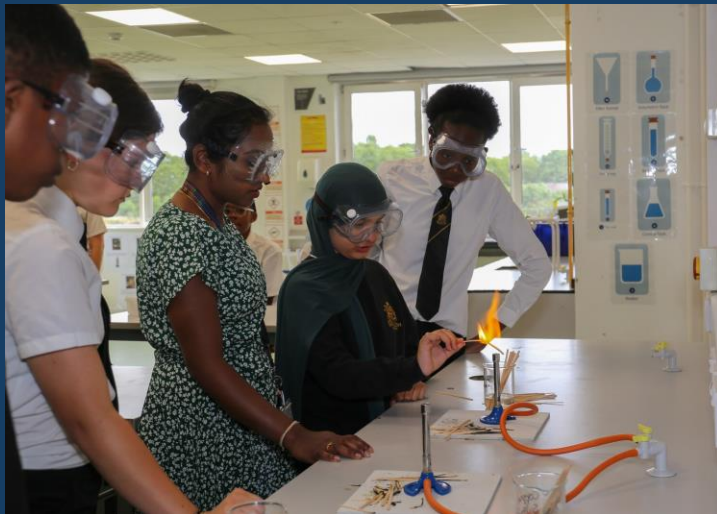


Thank you for joining us.



Our Opening evening is on 2nd October; we would love to see you so you can tour the site and join in activities 5-7pm.

Good luck to all the Year 6s for this year, we wish you every possible success.



The Basildon Lower Academy Year 6 Open Evening

Thursday 2nd October
5.00pm - 7.00pm

www.basildonloweracademy.org.uk

T:01268 552536 E:admin@basildonacademies.org.uk

There will be an opportunity to visit both sites; a complimentary bus will be available



